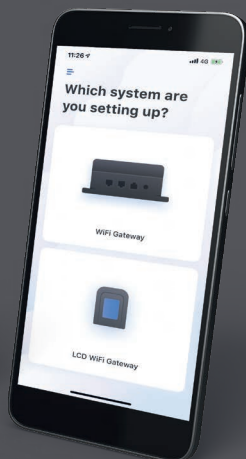
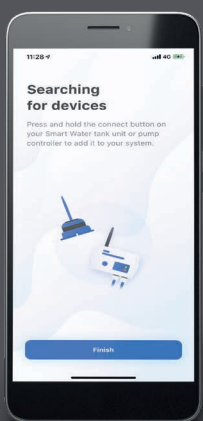
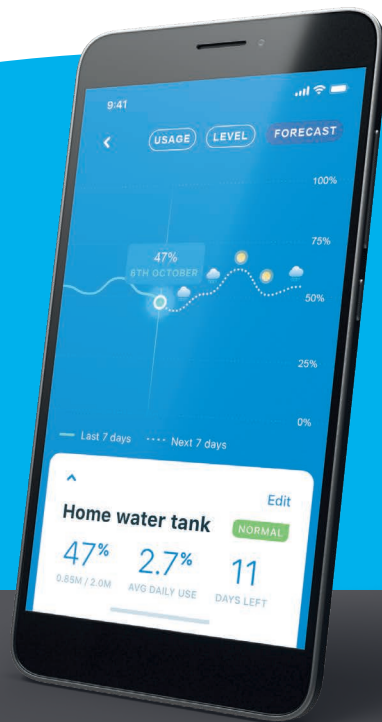




# Smart Facts

## Mobile App

The Smart Water App adds even more value to your water management system. The App can be used with either the WiFi LCD Keypad or the WiFi Gateway and is available for Android or iOS mobile devices. Once installed the App will provide a full feature set offering complete management of your water system and even offers weather forecasting for peace of mind. Automatic pump control, custom naming, additional users are all just the beginning of your experience with this powerful piece of technology.



- ### Features
- WiFi Enabled with free App available on iOS and Android devices
  - Long range wireless performance, tested up to 10km
  - Up to 12 tank transmitters and 12 pump controllers can be connected
  - The system learns your water usage to predict your time to empty
  - Custom alerts and alarms for full visibility of your system status
  - Fully programmable automatic pump operation
  - Name your tanks and pumps for ease of reference
  - Set the density for measurement of different fluids
  - Convenient timers to remind you of tank maintenance requirements
  - Range can be extended using the Active Repeater
  - Ethernet and RS485 connectivity options
  - Starter Pack provides everything you need to get up and running
  - Simple DIY installation and operation

See more at [www.smartwateronline.com](http://www.smartwateronline.com)

